



Changes to your local councils are coming



Bridport
Town Council

Why the change?

From 1st April 2024 the boundaries of your local council will change. This leaflet sets out what the changes are, how they will affect you and confirms the services provided by Bridport Town Council and Dorset Council.

The whole town of Bridport and West Bay has a strong sense of local identity and community spirit. Residents come together for the town's community events and to enjoy the unique blend of arts and culture offered by the town.

In July 2022 Dorset Council approved changes to how your local councils work, creating a single expanded Bridport parish comprising the majority of the existing Allington, Bradpole, Bothenhampton & Walditch, and Bridport parishes. New 'ward' areas will be created that respect the identities of the former parishes with a fair representation in terms of numbers of councillors.

The creation of a unitary Dorset Council has created challenges for town and parish councils in the area, particularly in 'stepping up' as the now second tier of local government in their areas. Bridport Town Council, as one of the larger councils in Dorset, has responded positively to protect and enhance services in its area, such as the Tourist Information Centre and Community Bus Service.



Bucky Doo Square during Bridport Hat Festival 2022

Local Council Services

The services Bridport Town Council provide:

- Allotments
- Beach Wheelchairs
- Buildings and Venue Hire
- Cemetery
- Charity Collection Licences
- Civic and Mayoral Events
- Community Bus (Service 7)
- Community Events
- Community Grants and Funding
- Community Groups Support
- Lengthsman Scheme
- Markets
- Parks, Play Areas & Open Spaces
- Public Footpaths
- Public Events
- Sitting Out Licences
- Tourist Information Centre
- Verge Maintenance
- West Bay Car Boot Sale



Contact: 01308 456722

email: enquiries@bridport-tc.gov.uk

The services Dorset Council provide:

- Blue Badges
- Building Control
- Bus Passes
- Car Parks & On-Street Parking
- Council Tax
- Dog Warden
- Drains & Gullies
- Elections
- Environmental Health
- Highways
- Housing & Housing Benefit
- Planning
- Public Rights of Way
- Public Toilets
- Public Transport
- Refuse Collection & Recycling
- Registrar
- Schools
- Social Care
- Street Cleaning & Lighting



Contact: 01305 221000

email: customerservices@dorsetcouncil.gov.uk

Levelling Council Tax explained

The level of Council Tax levied on residents for the costs of the Town Council services makes up about 10% of each household's Council Tax bill issued by Dorset Council every year. This amount for local services is agreed by Councillors by the end of January each year.

At present, Bridport Town Council receives Council Tax from residents of just over half of the built-up area of Bridport, while delivering services that benefit the whole town. This has resulted in an increasing number of concerns about different levels of Council Tax locally.

The widening of the town boundary in April 2024 will mean that everyone on the same Band rate in the new area will pay the same. As a result, we expect there will be adjustments to the amount paid towards local services.

There is an online survey seeking your thoughts on how Bridport Town Council should operate after April 2024:



<https://www.smartsurvey.co.uk/s/B6ZLWZ/>

The questionnaire is open until 30th August 2023

**Contact
details**

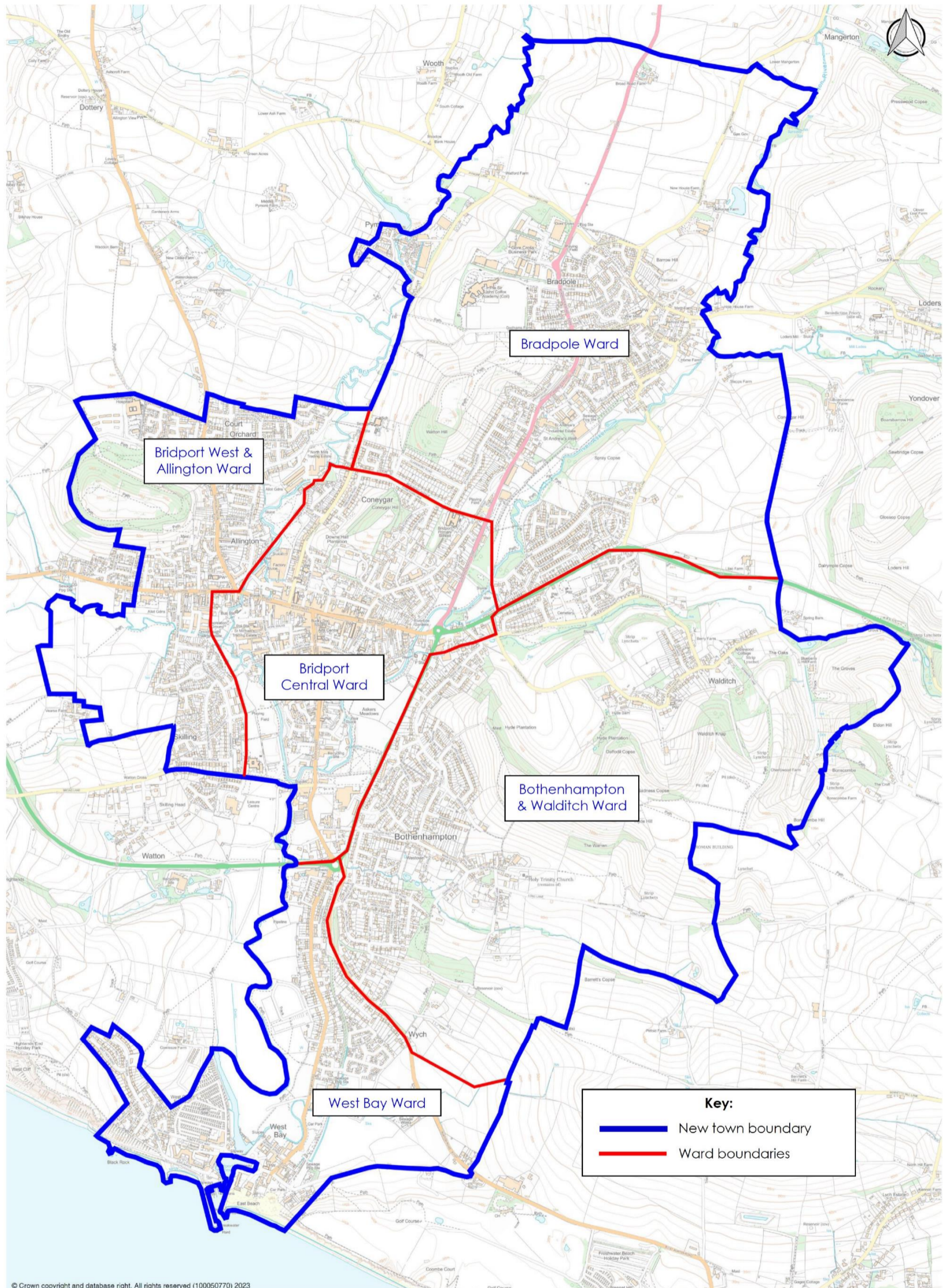
01308 456722

Mountfield, Rax Lane, Bridport, DT6 3JP

enquiries@bridport-tc.gov.uk

www.bridport-tc.gov.uk

An expanded Bridport Town Council with new area wards



The new arrangements in detail:

- A single council area incorporating most of the existing parishes of Allington, Bothenhampton & Walditch, Bradpole and Bridport;
- A total of 20 councillors, compared with 44 at present across the four parishes;
- Wards and council committees within the new council area based on local identity;
- Inclusion of most of the Foundry Lea (Vearse Farm) development into the single council area;
- Retention of a separate rural parish of Symondsburry.