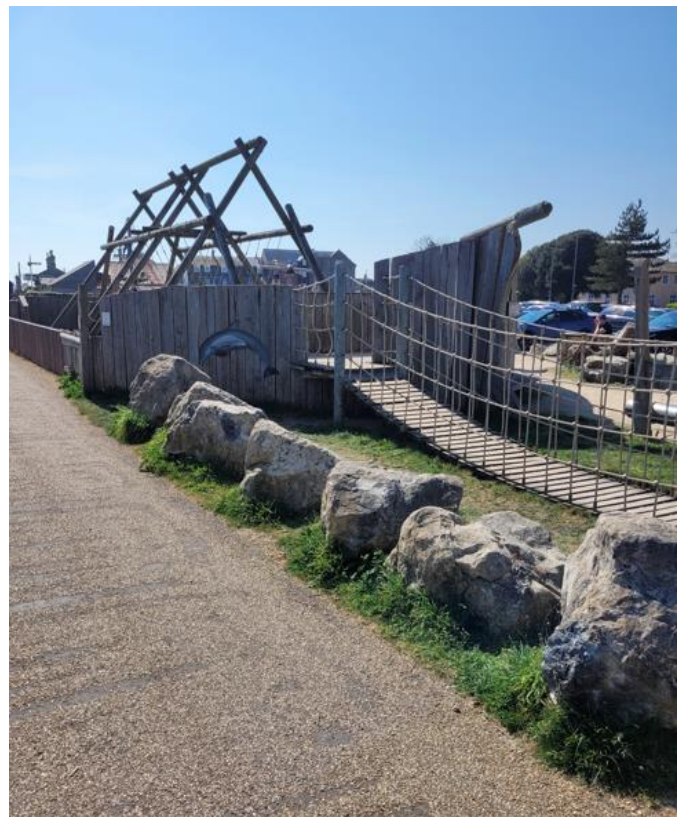


**Bridport Town Council  
Burton Road to West Bay Trailway  
Management Plan 2025-2030**



**DRAFT**



## Content

	Page
1. Background	3
2. Management Plan Consultation	6
3. Vision for the Trailway <ul style="list-style-type: none"><li>• Plan Objectives</li></ul>	7 8
4. Management Plan	9
5. Annual Action Plans	20



## 1. Background

The railway runs along the north side of Burton Road from Chestnut Road to Marsh Gate, crossing the road taking in the green and moving to run adjacent to West Bay down to the public toilets in West Bay Road car park. The railway provides a right of way for pedestrians, cyclists, users of mobility aids and horse riders from West Bay to Burton Road, and also includes a play area, picnic area and riverside land.

The railway was transferred to Bridport Town Council by, West Dorset District Council, in June 2021 and Dorset Council retain ownership of the railway surface as it is a Right of Way.

Following the declaration of a Climate Emergency all management plans for Bridport Town Council green spaces are being reviewed. This area has never been designated an open space and has never had a management plan. Hence this review to formalise this and hopefully work with a volunteer group to manage the area. The review considers current uses and looks to improve the areas for wildlife, and community use.

This new management plan process, includes community consultation, looking to define aims, objectives and actions for the next 5 years.



## Management Plan Area:

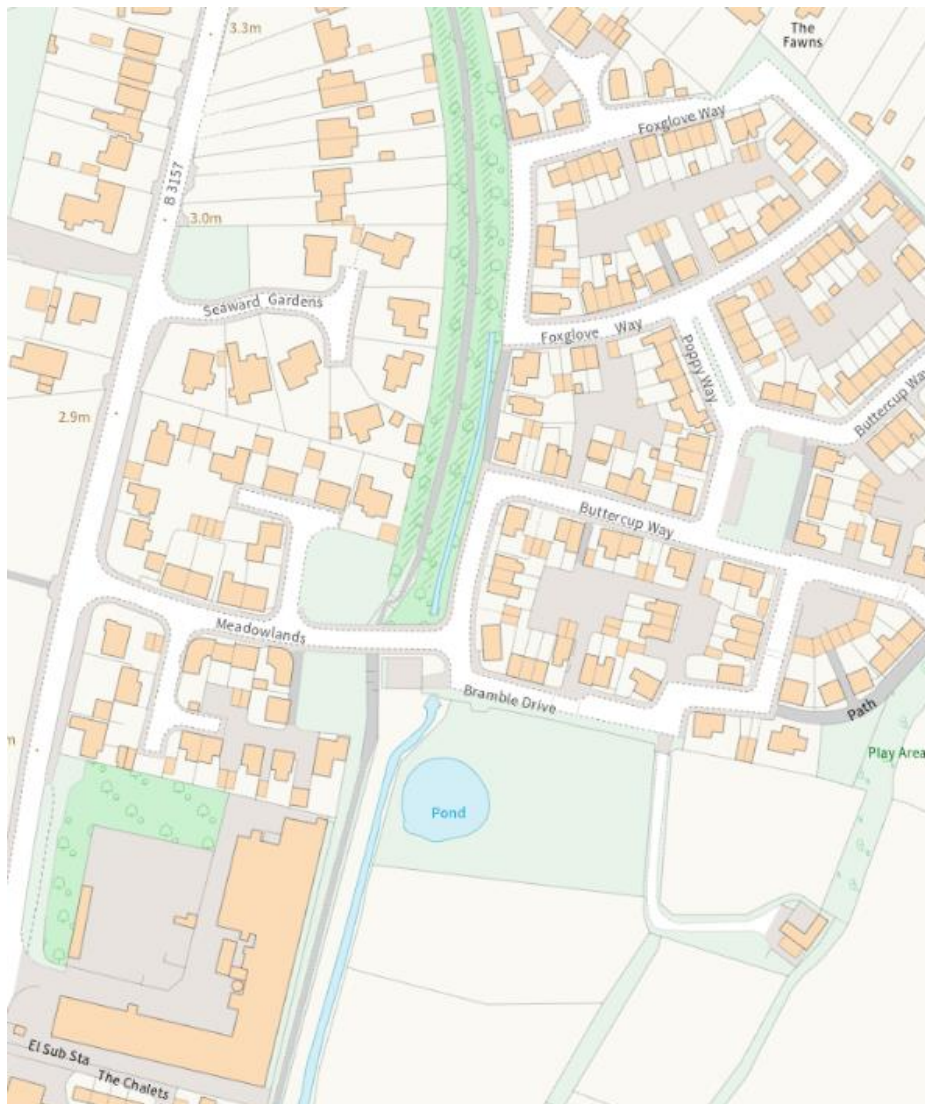


Permitted use of the land includes use as verge and ancillary land (with associated watercourse and infrastructure) to the public bridleway including stormwater ditches.

The public bridleway (owned by Dorset Council) must have a minimum width of three metres throughout its whole length where possible. Plus an open verge strip of land at least one meter in width along the length of each side of the trailway must be maintained, where possible. There are parts of the trailway where this is not possible due to pinch points, fencing, ditches, etc.

There is a ditch to the north of Meadowlands which must be maintained and kept clear as needed.

The map below shows the section where there is a ditch.



#### **Brief history of the site:**

2021 Dorset Council transferred site to Bridport Town Council

2020 Dorset Council installed new cycle parking stands located behind the toilets

2019 Dorset Council started vegetation clearance in January and completed the surface works on the bridleway in November

2016 Bridport Town Council extended the play area to include sensory installations

2010 Bridport Town Council opened a new play area at West Bay

## **2. Management Plan Consultations**

It is important that the management plan for the railway ensures that the interests of wildlife and the many users are balanced, and mitigations are put in place to address community concerns.

This draft management plan will be presented to Bridport Town Council for information at the Environment and Social Wellbeing Committee meeting on the 4<sup>th</sup> June and Full Council on the 24<sup>th</sup> June to be ratified, to start the public consultation.

Bridport Town Council with input from the local residents and users will review the delivery of management plan actions on an ongoing basis with a view to undertaking a formal review of the management plan aims and objectives to be in place by September 2025.

- A letter to all properties adjacent to the railway or nearby.
- Questionnaire for user groups.
- Online form for people to review and add comments.



### 3. Vision for the railway



**Key:**

- Area 1 – Top of Burton Road
- Area 2 – Burton Road to West Bay – Trailway
- Area 3 – Meadowlands to West Bay Road Car Park  
trailway
- Area 4 – River area
- Area 5 – Picnic area
- Area 6 – Play area

### **3.1 Objectives of the railway Management Plan:**

**Safeguard walking and cycling access**

**Undertake tree and wildflower planting to provide wildlife interest and structure**

**Enhance community uses of the site; interpretation boards**

**Provide additional seating to encourage people to enjoy and get to know the area**

**Carry out a wildlife survey, flora survey and bird survey**

**Establish a Management Group to carry forward objectives**

### **3.2 Other groups for consultation**

- **Bridport Tree Group**
- **Dorset Wildlife Trust**
- **Dorset Council Rights of Way**
- **Dorset Council Cycleways**
- **Sustrans**
- **River Group**
- **Environment Agency**
- **Dog walkers**



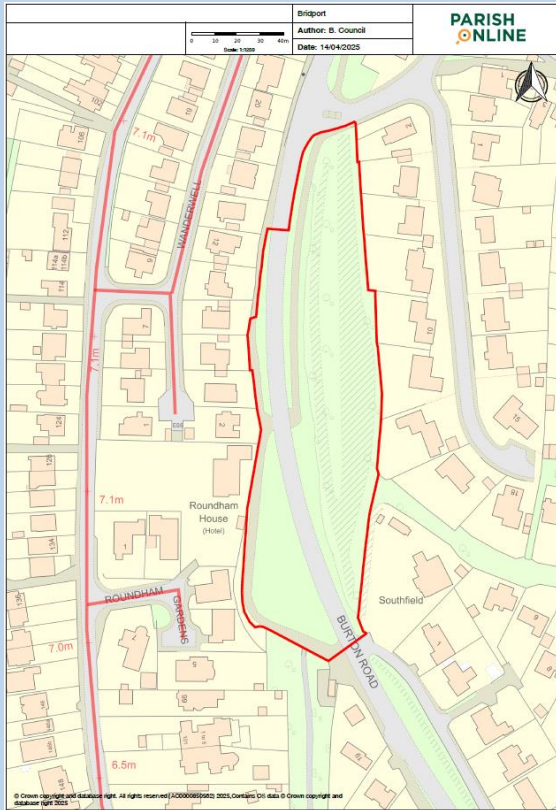
## 4. Management Plan - 2025 - 2030

<b>4.1 Overall Plan</b>  <b>Management plan objectives in priority order:</b> <ul style="list-style-type: none"> <li>• Access for all</li> <li>• Extended areas for tree planting and wildflowers</li> <li>• Greater community use of the areas</li> <li>• Provide natural play and fitness opportunities</li> </ul>	
<b>4.2 By Habitat Type:</b>	
<b>Access/ Paths/ Boundaries</b>	<p>Maintain and promote open access for all along the trailway.</p> <p>Dorset Council to maintain cycle path and promote as Link route to Sustrans route 267/2.</p> <p>Maintain 1m cut verges to all access routes through regular mowing, where possible.</p>
<b>River banks</b>	Maintain ditch clearance north of Meadowlands to West Bay.
<b>Trees/ Tree planting</b>	<p>Manage safety issues through a 5 yearly insurance arboriculture survey. Deal with dangers, remove dead wood either standing or on site.</p> <p>Plant native standards alongside the river to replace trees removed due to health issues.</p> <p>Permission for memorial trees to be planted along the lower end of the trailway near the car park and play area.</p>
<b>Wildflower Area</b>	<p>Plant native spring bulbs and native wildflower plugs in all areas. Cut grass following flowering in June and again in October each year.</p> <p>Maintain a 1m cut/scalloped verge from footpath.</p> <p>Maintain the areas where Bee Orchids grow.</p>

<p><b>Other grassed areas –</b></p>	<p>Maintain as amenity grassed areas, Regular mowing 1m from all path margins.</p> <p>All grassed areas to be cut in late October with cuttings to be removed.</p>
<p><b>Management –</b></p>	<p>To ensure the ditch at Meadowlands is kept clear in the water channel.</p> <p>To ensure eradication treatment of the Water Primrose. Continue working with the Environment Agency until eradicated.</p> <p>To ensure annual checks on all trees are carried out and actions taken from the reports.</p> <p>Cut back hedgerows to a meter either side where possible.</p> <p>Cut grass and strips on a monthly basis including play area, picnic area and river area.</p>

## 4.3 By Management Block:

### AREA 1 – Top of Burton Road



Regular maintenance leaving a private wild area for wildlife.

Consult with users, residents and members of the public to inform them about the wildflower area including the Bee Orchids.

Future link to cycleway at The Crown roundabout

Possibility of more benches and shared space signage





## AREA 2 – Burton Road to West Bay Trailway



Rationalise, restore and were required provide new interpretation boards.

Plant areas of native spring bulbs and wildflower plugs in natural sweeps.

Maintain area by mowing and removing cuttings.

Maintain a 3 metre 'scalloped' cut verge alongside path through this area and onto Area 3.

Remove and eradicate invasive species and Bamboo.

Discuss with landowners entrances out onto the trailway and agree a way forward.

Possibility of more benches and shared space signage









### AREA 3 – Meadowlands to West Bay Road Car Park



Maintain 8m riverside margin as clear green space as part of Environment Agency flood management scheme, where possible.

River clearance.

Agree with adjacent properties any ongoing issues over management and ownership.

Planned clearance of some areas before new planting can commence.

Possibility of more benches and shared space signage.



10 April 2025 14:11



**Bridport**

**Author:** B. Council

**Date:** 15/04/2025

**PARISH ONLINE**

Scale: 1:1000  
0 10 20 30 40m

WEST

The Chaleis

FISHERS

+ 2.8m

Path

Car Park

+ 2.8m

Pony River

PC

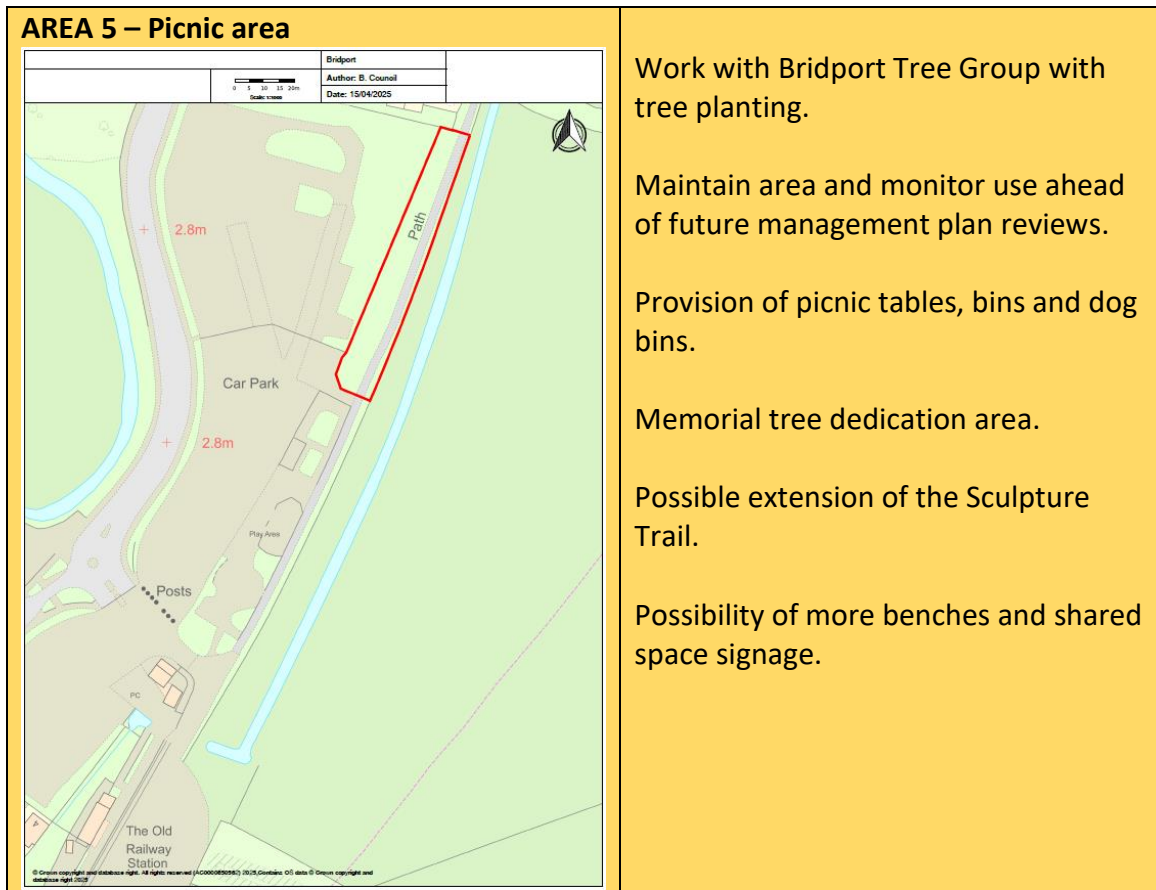
The Old Railway Station

© Crown copyright and database right. All rights reserved (AC0900000000) 2023.Cornwall CTS made © Crown copyright and database right 2023.

Possibility of more benches and shared space signage.











Possibility of more benches and shared space signage.



## 5. Action Plan - Actions Year by Year:

### 5.1 2025/26 Actions

What	When	Who
<b>Trees</b>  Plant native broadleaved trees to create small, wooded corpses  Maintain new tree planting, watering and removing growth competition	October 2025  Summer	BTC with volunteers  BTC with Volunteers and Bridport Tree Group
<b>Wildflower Area</b>  Plant native spring bulbs and wildflower plugs in natural sweeps  Carry out a wildlife, flora and bird survey	Autumn	Volunteers  Work with Dorset Wildlife Trust
<b>Grassed Areas</b>  Mow 1m verges, where possible  Cut wildflower and tree planting areas	April – May  Oct	BTC  BTC
<b>Information/ interpretation</b>  Interpretation boards to be installed at the top of the railway near Burton Road	October	BTC
<b>River</b>  Planned clearance including Water Primrose removal	Spring / Summer	Work with river volunteer groups and the Environment Agency
<b>Boundaries</b>  Engage with adjacent properties in regard to ongoing issues over management and ownership	September/October 2025	BTC



### 5.3 2025/26 Actions

What	When	Who
<b>Trees</b>  Maintain new tree planting, watering and removing growth competition	Summer/Autumn	BTC with Volunteers
<b>Grassed Areas</b>  Mow 1m margins to all paths where possible  Cut wildflower and tree planting areas	Monthly May- Aug  Oct	BTC  BTC
<b>River</b>  Planned clearance including Water Primrose removal	Spring / Summer	Work with river volunteer groups and the Environment Agency
<b>Roadside Boundaries</b>  Create opportunities to diversify planting with native shrubs	Winter	BTC

#### 5.4 2026/27 Actions

What	When	Who
<b>Trees</b>  Maintain new tree planting, watering and removing growth competition	Summer	BTC with Volunteers
<b>Grassed Areas</b>  Mow 1m margins to all paths, where possible  Cut wildflower and tree planting areas	Monthly  Oct	BTC  BTC
<b>River</b>  Planned clearance including Water Primrose removal	Spring / Summer	Work with river volunteer groups and the Environment Agency

#### 5.5 2027/28 Actions

What	When	Who
<b>Trees</b>  Maintain new tree planting, watering and removing growth competition	Summer	BTC with Volunteers
<b>Grassed Areas</b>  Mow 1m margins to all paths where possible  Cut wildflower and tree planting areas	Monthly  Oct	BTC  BTC
<b>River</b>  Planned clearance including Water Primrose removal	Spring / Summer	Work with river volunteer groups and the Environment Agency